



new product announcement

October 4, 2004

MODIS™ 4.4

Includes all features & titles from bundles 2.0, 3.2, 4.1, & 4.2

More Asian Import Diagnostic Horsepower Plus 2 New Troubleshooters



- 2003 Asian Import Vehicle Communications Software
- 2002 Asian Import Driveability Fast-Track® Troubleshooter
- 2002 Domestic Driveability Fast-Track® Troubleshooter
- 2003 VW/Audi Communications Software*
* Requires optional MODIS™ European Software Kit, EEMS320C03
- Support for Optional Fast-Track® PCLink Software

1st time
MODIS™ buyers

Upgrade from
MODIS™ bundle 4.2

Upgrade from bundle
4.1 or earlier

MODIS™ Elite Kit EEMS300C03

Includes:

- MODIS™ with software bundle 4.4
- Asian and domestic scan tool cables, adapters, and personality keys
- 2 Shielded lab scope leads • 2 non-shielded lab scope leads
- Alligator clips and test probes • Secondary coil adapter lead
- Clip-on secondary coil adapter • Inductive RPM pick-up
- Battery • Power adapter • All related reference and user's manuals

4.4 Software Bundle EESP300C03

Includes:

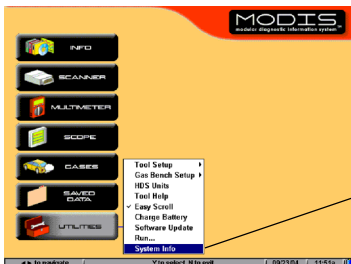
- Installation Instructions
- Bundle 4.4 Compact Flash
- Troubleshooter reference manual CD
- K-17 and K-18 Personality Keys

4.4 Software Bundle EESP300C03H

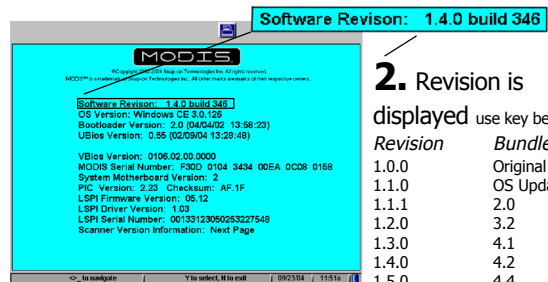
Includes:

- Installation Instructions
- Bundle 4.4 Compact Flash
- Troubleshooter reference manual CD
- K-13A, K-16, K-17 and K-18 Personality Keys
- Upgraded Scanner Plug In (SCPI)
- Bundle 4.2 compact flash (DISCARD – latest update is on 4.4 compact flash)

To determine the software bundle of a Modis:



1. Select UTILITIES/ System Info from the menu



2. Revision is displayed use key below

Revision	Bundle
1.0.0	Original
1.1.0	OS Update
1.1.1	2.0
1.2.0	3.2
1.3.0	4.1
1.4.0	4.2
1.5.0	4.4

WARNING • Read & follow instructions before use.

EU - Unavailable
©2004 Snap-on Incorporated. All Rights Reserved.
#20879

Brand Marketing

Snap-on, Fast-Track & MODIS are trademarks of Snap-on Incorporated.

E3
Catalog 700

NEW COVERAGE/FEATURES!

2003 ASIAN IMPORT VEHICLE COMMUNICATION SOFTWARE

- In-depth coverage for 1983 through 2003 vehicles • Two entirely new model years of coverage
- Manufacturer-specific enhanced coverage for Acura, Honda, Hyundai, Infiniti, Isuzu, Kia, Lexus, Mazda, Mitsubishi, Nissan, and Toyota

2002 DOMESTIC DRIVEABILITY FAST-TRACK TROUBLESHOOTER

- Thousands of New Code and Symptom Tips for 1980 through 2002 Vehicles
- Experience-Based Coverage for Ford, GM, Chrysler and Jeep Expanded through 2002
- New symptom tips added • Enhanced diesel symptom tips with additional insight from techs in the field
- Technical service bulletins through 2003 model year • Enhanced functional test descriptions
- Enhanced component testing • Next generation Chrysler evaporative leak detection (NVLD) system tests & diagnostic procedures
- Ford PATS system information added

2002 ASIAN IMPORT DRIVEABILITY FAST-TRACK TROUBLESHOOTER

- Thousands of New Code and Symptom Tips for 1980 through 2002 Vehicles
- Enhanced OBD-II Fast-Track® data scan tips reflect manufacturer-specific enhanced datastream capabilities
- Over 10,000 code and symptom tips for 13 Asian import makes
- New and updated service bulletin-related tips for 2002 and earlier model year vehicles
- Separate "code set conditions" tip section for 1994–2002 OBD-II cars and trucks
- Additional tips for all engine-related OBD-II codes through the 2001 model year
- Additional new non-code related tips up to 2002 models
- Revised or enhanced tips for 2000 & earlier model year vehicles
- Updated reference manual on CD with additional wiring schematics relating to OBD-II code tips and enhanced component location schematics, procedures and illustrations through 2002

2003 VW/AUDI VEHICLE COMMUNICATION SOFTWARE*

* Requires MODIS European Vehicle Communication Software Kit ([Link](#))

- Volkswagen model variations include Beetle, Cabriolet, Corrado, Eurovan, Fox, Golf, GTI, Jetta, Passat, and Vanagon
- Audi model variations include 80,90,100,200, A4, A6, A6 Wagon, A8, Allroad, Cabriolet, Coupe, S4, S6, S8, TT, and V8
- Supports all engine, transmission, ABS, and airbag systems • Covers up to 35 additional on-board systems
- Detailed parameter definitions in users manual • Pre-defined data groups
- Exclusive readiness code setting charts for validating repairs and emission testing
- Expert mode provides advanced diagnostic factory tool capabilities

SUPPORT for OPTIONAL PCLINK SOFTWARE (available 1st quarter 2005, EESP311A01)

- Establish a wireless MODIS™ connection to your PC
- Move, archive, & view your MODIS™ files and presets on a PC • Playback lab scope snapshots on your PC

EXISTING COVERAGE/FEATURES

2003 DOMESTIC VEHICLE COMMUNICATION SOFTWARE

GM VEHICLE COMMUNICATION SOFTWARE

- Engine and body diagnostics, incl. connector locator, ECM & EGR tests, body, airbag, functional tests, crank position relearn, & more
- Bi-directional testing, including ICB, IAC, EGR, Delco-Moraine III bleeding, transmission shifting, TCC PWM, and adaptation memory
- Transmission diagnostics, including 4T80E, 4L60E, 4T60E, 4L80E, Saturn, Catera • 2-speed automatic transfer case
- ABS diagnostics, including Bosch, VCM4WAL, RWAL, ASR, Delco-Moraine, Teves, and Catera

CHRYSLER VEHICLE COMMUNICATION SOFTWARE

- Engine & body diagnostics, including connector locators, CCD, SBEC, SMEC, Renix, MCU, and Delco
- Bi-directional testing, including misfire counters, EGR & purge tests, generator field, PCM VIN programming and much more
- Cummins diesel coverage • ABS coverage, including Teves MKIV & MK20, and Bendix 4, 6 & 10
- Transmission diagnostics, including EMCC reset, Quick Learn, 42LE, A604, CVI, 42RE & AW4

FORD VEHICLE COMMUNICATION SOFTWARE

- Engine & body diagnostics, including connector locators, DCI, GEM body, EEC & MCU, Super Star II functions, SAE J1930 terms, & more
- Functional Tests, including 7.3 Powerstroke Transmission Diagnostics
- ABS Brake Diagnostics, including Bosch, Teves, and Kelsey-Hayes systems

GLOBAL OBD VEHICLE COMMUNICATION SOFTWARE

- Establishes communication with the appropriate vehicle protocol automatically, including CAN (CAN Vehicle require optional adapter<LINK to MT250083>) • Tests system readiness status • Mode 1: graphs or displays current data • Mode 2: retrieves freeze frame data
- Mode 3: monitors diagnostic trouble codes • Mode 4: clears emissions related data • Monitors test parameters and results, which include: Mode 5: oxygen sensor monitoring, Mode 6: non-continuously monitored systems, Mode 7: diagnostic trouble codes detected during last drive • Mode 9: displays important vehicle information

EXISTING COVERAGE/FEATURES *continued*

DOMESTIC TRANSMISSION FAST-TRACK® TROUBLESHOOTER

- Transmission/transaxle coverage for GM, Ford, Chrysler and Jeep vehicles 1981 - 2000 model year
- Technical service bulletins through 2000 model year
- Enhanced Fast-Track® data scan tips
- Expanded symptom tips, including hundreds of updates to older transmissions
- Transmission functional test insight
- Hundreds of transmission wiring diagrams on CD

ASIAN IMPORT TRANSMISSION FAST-TRACK® TROUBLESHOOTER

- Enhanced OBD-II Fast-Track® data scan tips reflect manufacturer-specific enhanced datastream capabilities
- Over 10,000 code and symptom tips for 13 Asian import makes • Technical service bulletin tips through 2001
- Separate "code set conditions" tip section for 1994–2001 OBD-II cars & trucks
- Additional tips for all engine-related OBD-II codes through the 2001 model year
- New non-code related tips up to 2001 models • Revised or enhanced tips for 2000 & earlier model year vehicles
- Additional or updated service bulletin-related tips for 2001 & earlier model year vehicles
- Updated reference manual on CD with additional or enhanced wiring schematics relating to OBD-II code tips and component location schematics, procedures and illustrations through 2001

ABS FAST-TRACK® TROUBLESHOOTER

- Solutions for all ABS-related codes through 2001 models • Symptom-based tips for 2001 models and earlier
- 24 vehicle makes supported • Information revised, enhanced and added for 2000 & earlier models
- Service bulletins updated for 2001 & earlier vehicles • ZAE and AB2 Air Bag Systems
- EWM203, EWM210 and EWM220 Electronic Shift Control Modules • KLA and TAU Climate Control Systems
- EA/CC/ISC Electronic Actuator, Cruise Control, Idle Speed Control Module
- ML Transfer Case

2003 BMW VEHICLE COMMUNICATION SOFTWARE*

- * Requires MODIS European Vehicle Communication Software Kit (Link)
- Over 400 BMW model configurations • Model variations include 3-Series, 5-Series, 7-Series, 8-Series, X5, Z1, Z3, Z8, MINI
- Review and print important control unit identification information • Advanced LED menu to display state of many digital signals
- Expanded parameter definitions on-screen and in the user's manual
- Exclusive U.S. specific BMW application charts separate European and U.S. vehicles
- Codes, data, actuator tests, and functional tests for 30 BMW engine systems
- Oil and service light resetting procedures included • BMW application controls • Codes and data for 16 transmission systems
- Electronic transmission coverage • Reset adaptation after ECU and gearbox changes • 10 anti-lock brake systems
- Integrated ABS/ASC/DSC MIL explanations

2003 MERCEDES-BENZ VEHICLE COMMUNICATION SOFTWARE*

- * Requires MODIS European Vehicle Communication Software Kit (Link)
- Complete parameter data lists for engine and transmission systems
- Bi-direction actuator tests for engine systems with capabilities similar to the factory tool
- Automatic version coding for engine and transmission control module replacement
- Engine management system coverage: LH-SFI: 1992–1996, HFM-SFI: 1993–1995, ME-SFI: 1996–2003, EDC, EDS, and IFI diesel management systems
- Transmission systems coverage: EGS 5.2: 2002–2003, EAG: 1992–1996, EGS: 1996–2003
- Other systems coverage: ZAE and AB2 Air Bag Systems, EWM203, EWM210 and EWM220 Electronic Shift Control Modules, KLA and TAU Climate Control Systems, EA/CC/ISC Electronic Actuator, Cruise Control, Idle Speed Control Module, ML Transfer Case

ADVANCED IGNITION SCOPE CAPABILITIES

- Multiple Secondary Ignition Modes • Parade 5ms • Raster 5ms • Superimposed 5ms • Single Cylinder Modes
- Cylinder 5ms • Single Cylinder Ignition
- Waste Spark and Direct Ignition Systems (Require the Optional Snap-on Distributorless Ignition System Kit)
- Direct Ignition Systems (Requires Optional Coil-On-Plug Adapters)

HEAVY DUTY VEHICLE COMMUNICATION SOFTWARE*

- *Requires Optional MODIS Heavy Duty Vehicle Communication Kit
- Supports Trouble Codes and Parameter Data for Most Engine, Transmission and ABS Systems